



CAT-2023F
EFFECTIVE JUNE 2023

FOLLOW US ON SOCIAL MEDIA
@QUALITYCHAINCORP



2023 CHAIN CATALOG

FORESTRY



NORDIC



NORDICTM **tire chains** engineered in Canada



NORDIC™ SKIDDER

- STUDDED LINKS ON NET STYLE
- FORGED LUGS ON RING STYLE
- ALL ALLOY CONSTRUCTION


NR - NORDIC RING

NTR - NORDIC TIGHT RING

NN - NORDIC NET
5/8" - 16 MM

TIRE SIZE	NORDIC RING		NORDIC TIGHT RING		NORDIC NET	
	STOCK NUMBER	WT PER PAIR (LBS)	STOCK NUMBER	WT PER PAIR (LBS)	STOCK NUMBER	WT PER PAIR (LBS)
23.1-26	NR231-16	662	NTR231-16	948	NN231-16	1030
24.5-32; 28L-26	NR245-16	899	-	-	NN245-16	1143
30.5-32	NR305-16	991	-	-	NN305-16	1148

11/16" - 18 MM

TIRE SIZE	STOCK NUMBER	WT PER PAIR (LBS)	STOCK NUMBER	WT PER PAIR (LBS)	STOCK NUMBER	WT PER PAIR (LBS)
24.5-32; 28L-26	NR245-18	1023	NTR245-18	1237	NN245-18	1298
30.5-32	NR305-18	1152	NTR305-18	1267	NN305-18	1366
35.5-32	NR355-18	1255	-	-	NN355-18	1531

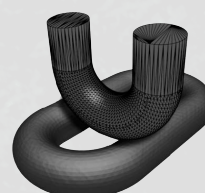
1" - 25 MM

TIRE SIZE	STOCK NUMBER	WT PER PAIR (LBS)	STOCK NUMBER	WT PER PAIR (LBS)	STOCK NUMBER	WT PER PAIR (LBS)
30.5-32	-	-	NTR305-25	1675	-	-
35.5-32	-	-	NTR355-25	1897	-	-
73x44x32	-	-	NTR730-25	1823	-	-

NORDIC™ DOUBLE DIAMOND TOP MOUNT U-GRIP NETLINK

- THE USE OF TOP MOUNTED U-STUDS MAXIMIZES TRACTION AND PREVENTS THE CHAIN FROM ROLLING OVER
- DOUBLE DIAMOND PATTERN FORMS A NET OVER THE TIRE PROVIDING EXCELLENT COVERAGE

TIRE SIZE	STOCK NUMBER	WT / PR(LBS)	MATERIAL SIZE
30.5-32	DDU3053234	1473	19 MM (3/4")


U-GRIP CLOSE-UP




MADE IN
NORWAY

TRYGG NET LINK

- NET LINK IS A VERSATILE MULTIPURPOSE CHAIN FOR USE ON ALL TYPES OF HEAVY EQUIPMENT.
- PROVEN DOUBLE DIAMOND DESIGN WITH DOUBLE STUDS PROVIDES FULL TIRE WIDTH TRACTION.
- FULLY HARDENED AND ANNEALED ENSURES TROUBLE-FREE PERFORMANCE IN ALL CONDITIONS AND TEMPERATURES.

5/8"- 16 MM

TIRE SIZE	STOCK NUMBER	WT/ PR (LBS)
30.5-32	611371	1223

3/4"- 19 MM

TIRE SIZE	STOCK NUMBER	WT/ PR (LBS)
24.5-32	611466	1349
30.5-32	611471	1459
35.5-32	611482	1811

AVAILABLE IN 1/2" - 13MM, 5/8" - 16MM, 3/4" - 19MM, AND 7/8" - 22MM
 ALSO AVAILABLE WITHOUT STUDS FOR USE ON ROADS AND LOADING YARDS.



TRYGG TROLL

- TRYGG TROLL IS DESIGNED WITH LARGER GAUGE LINKS AND STUDS AROUND THE CROWN OF THE TIRE WHERE THE PRESSURE AND CONTACT ARE THE GREATEST
- STIFF MESH PATTERNS MINIMIZE MOVEMENT AND KEEP STUDS VERTICAL
- DEEP CASE HARDENED ALLOY STEEL ENSURES DURABILITY AND LONG SERVICE LIFE

7/8" - 22 MM

SINGLE DIAMOND

TIRE SIZE	STOCK NUMBER	WEIGHT PER PAIR (LBS)
30.5-32	628971	1458
35.5-32	628982	1882

DOUBLE DIAMOND

TIRE SIZE	STOCK NUMBER	WEIGHT PER PAIR (LBS)
30.5-32	628571	1823
780/50-28.5	628573	1600
35.5-32	628582	2242



MADE IN
NORWAY



TRYGG SMT COMBO

- *SMT COMBO FITS MORE THAN ONE TIRE SIZE*
- SMT PATTERN HOLDS THE CHAIN ON TOP OF THE TIRE LUGS, KEEPING THE STUDS IN CONSTANT CONTACT WITH THE TERRAIN
- OVERSIZED STUDS INCREASE GRIP AND LAST LONGER
- GREAT FOR USE WITH SNOW CLEARING, FORESTRY AND CONSTRUCTION VEHICLES

TIRE SIZE	ADDITIONAL TIRE SIZES	STOCK NUMBER	GAUGE INCHES	MM	WEIGHT/ PR (LBS)
18.4-30	17.5-25; 16.9-34; 16.9-30	606552	1/2"	13	442
23.1-26	20.5-25; 18.4-34; 18.00-25	608965	5/8"	16	717
24.5-32	23.5-25; 28L-26; 23.1-34	608968	5/8"	16	860
30.5-32	20.8-38; 18.00-25L5	608969	5/8"	16	888
	26.5STD+L5; 29.5-25STD				



MADE IN
NORWAY

CHAIN EXTENSIONS AVAILABLE UPON REQUEST





THE GENESIS TRACK SYSTEM WAS DESIGNED TO
MAXIMIZE OPERATIONAL EFFICIENCY WHILE
REDUCING COSTS AND MINIMIZING DOWNTIME.

THE FULLY FORGED 32MM CONNECTING LINKS
OFFER UNMATCHED DEPENDABILITY AND WEAR LIFE.

THE GENESIS TRACKS CAN TACKLE ANY
TERRAIN YOU THROW AT THEM.

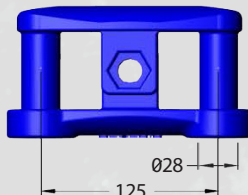


NOKIAN FOREST KING F

TIRE SIZE	STOCK NUMBER	GROUSER PROFILE	WEIGHT PER PAIR (LBS)
710/45-26.5	MT710/45-3231	MOUNTAIN MT86	4920
750/55-26.5	MT750/55-3231		5539
780/50-28.5	MT780/50-3231		5800

SINGLE WHEEL CONVERSION KIT AVAILABLE, CALL FOR DETAILS

MECHANICAL
CONNECTORS
KONNECT-125 / 175 / 225



GENESIS TRACK
INSTALLATION TOOL
SOLD SEPARATELY

PART # 2508-MT86
SEE PAGE 11



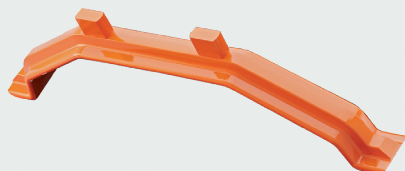
TRYGG BALDER SINGLE WHEEL TRACKS

- STEEP SLOPE RUNNER
- CLIMBING GRIP AND STABILITY ON RUGGED MOUNTAINS
- POWERS THROUGH SNOW, MUD AND ICE
- EXTENDS LIFE OF WORN TIRES
- OUTLASTS CHAINS BY UP TO DOUBLE THE HOURS
- MADE OF BORON ENHANCED ALLOY STEEL

**FORWARDER AND HARVESTER TRACKS AVAILABLE,
CALL FOR DETAILS**

BALDER SKIDDER SINGLE WHEEL

TIRE SIZE	STOCK NUMBER	CROSS BAR LENGTH (IN)	GROUSER PROFILE	WEIGHT PER PAIR (LBS)
30.5-32	670072	38"	26 MM - 1" DOUBLE CLEAT	2977
35.5-32	670083	44"		3276



CROSSBAR WITH RAISED RIDGE



DOUBLE CLEATS ON EVERY CROSSBAR
1 3/4" X 7/8" X 1 3/8"



TRACK LOCK

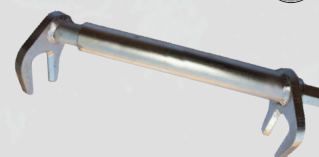
THREE REMOVABLE CROSSBARS ALLOW
THE OPERATOR TO KEEP THE TIGHTNESS
ADJUSTED PROPERLY AS THE TIRES AND
TRACKS WEAR OVER TIME

8 TRACK LOCKS INCLUDED



TRACK LOCK
INSTALLATION TOOL
SOLD SEPARATELY

PART # 671425
SEE PAGE 11



TRYGG SUPER 7

- 7x9 MM RECTANGULAR STUDS
- 7 MM ALLOY CROSS CHAINS COUPLED WITH 6 MM HARDENED SIDE CHAIN
- 35% LIGHTER THAN STANDARD 8 MM STUDDED CHAIN
- SINGLE AND DUAL TRIPLE MOUNT (6-LINK SPACING)
- TIGHT SINGLES ALSO AVAILABLE (4-LINK SPACING)



MADE IN NORWAY



9/32" - 7 MM

SINGLE
NON-CAM
(1 PR/BAG)

SINGLE
W/CAM
(1 PR/BAG)

DUAL TRIPLE
NON-CAM
(1/2 PR/BAG)

DUAL TRIPLE
W/CAM
(1/2 PR/BAG)

TIRE SIZE	STOCK NUMBER	WEIGHT/ PR (LBS)	STOCK NUMBER	WEIGHT/ PR (LBS)	STOCK NUMBER	WEIGHT/ PR (LBS)	STOCK NUMBER	WEIGHT/ PR (LBS)
11-22.5; 10.00-20	490374	48	491374	48	494374	90	495374	90
11-24.5; 10.00-22	490375	51	491375	51	494375	95	495375	95
385/65-22.5	490424	59	491424	59	-	-	-	-
425/65-22.5	490444	66	491444	66	-	-	-	-



TRYGG

TRYGG CLASSIC 8

- SINGLE AND DUAL TRIPLE MOUNT (4-LINK SPACING)
- DOUBLE DUTY SINGLES ALSO AVAILABLE (2-LINK SPACING)



STANDARD PACKAGING
Packed 1 Pair Per Bag
(Duals Packed 1/2 Pair Per Bag)



5/16" - 8 MM

SINGLE
NON-CAM
(1 PR/BAG)

SINGLE
W/CAM
(1 PR/BAG)

DUAL TRIPLE
NON-CAM
(1/2 PR/BAG)

DUAL TRIPLE
W/CAM
(1/2 PR/BAG)

TIRE SIZE	STOCK NUMBER	WEIGHT/ PR (LBS)	STOCK NUMBER	WEIGHT/ PR (LBS)	STOCK NUMBER	WEIGHT/ PR (LBS)	STOCK NUMBER	WEIGHT/ PR (LBS)
11-22.5; 10.00-20	460200	75	460201	75	464200	136	464201	136
11-24.5; 10.00-22	460220	79	460221	79	464220	145	464221	145
385/65-22.5	450924	88	457424	88	-	-	-	-
425/65-22.5	450944	88	457444	88	-	-	-	-

NORDIC™ 7 MM STUDDED ALLOY

- BORON ENHANCED ALLOY STEEL
- 7 MM ALLOY CROSS CHAIN AND 6 MM HARDENED SIDE CHAIN
- 35% LIGHTER THAN STANDARD 8 MM STUDDED CHAIN
- SINGLE AND DUAL TRIPLE MOUNT (6-LINK SPACING)
- ENGINEERED IN CANADA



9/32" - 7 MM

TIRE SIZE	SINGLE NON-CAM (1 PR/BAG)	SINGLE W/CAM (1 PR/BAG)	WT / PR (LBS)	DUAL TRIPLE NON-CAM (1/2 PR/BAG)	DUAL TRIPLE W/CAM (1/2 PR/BAG)	WT / PR (LBS)
	STOCK NUMBER	STOCK NUMBER		STOCK NUMBER	STOCK NUMBER	
11-22.5; 10.00-20	S343LW	S343LWQC	49	S743LW	S743LWQC	93
11-24.5; 10.00-22	S344LW	S344LWQC	52	S744LW	S744LWQC	97
385/65-22.5	S372LW	S372LWQC	59	-	-	-
425/65-22.5	S377LW	S377LWQC	67	-	-	-



NORDIC™ 8 MM STUDDED ALLOY

- BORON ENHANCED ALLOY STEEL
- SINGLE AND DUAL TRIPLE MOUNT (4-LINK SPACING)
- ENGINEERED IN CANADA



5/16" - 8 MM

TIRE SIZE	SINGLE NON-CAM (1 PR/BAG)	SINGLE W/CAM (1 PR/BAG)	WT / PR (LBS)	DUAL TRIPLE NON-CAM (1/2 PR/BAG)	DUAL TRIPLE W/CAM (1/2 PR/BAG)	WT / PR (LBS)
	STOCK NUMBER	STOCK NUMBER		STOCK NUMBER	STOCK NUMBER	
11-22.5; 10.00-20	S343HD	S343HDQC	76	S743HD	S743HDQC	116
11-24.5; 10.00-22	S344HD	S344HDQC	81	S744HD	S744HDQC	124
385/65-22.5	S372HD	S372HDQC	91	-	-	-
425/65-22.5	S377HD	S377HDQC	97	-	-	-



FORESTRY PARTS & ACCESSORIES

STOCK NUMBER	APPLICATION	STANDARD PACKAGING	WEIGHT PER PKG (LBS)
350100	TRYGG Skidder Installation Tool	1 EACH	9
2506HD	Heavy Duty Installation Tool		14
671425	TRYGG Balder Track Installation Tool		13
2508-MT86	Genesis Track Installation Tool		27



350100



2506HD



671425

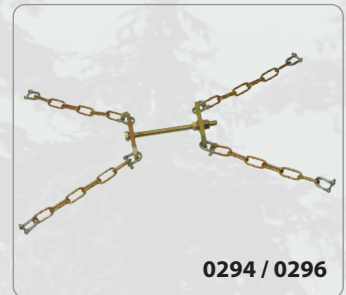


2508-MT86

LINK SHACKLE ADJUSTER

STOCK NUMBER	APPLICATION	FITS RIM SIZE (IN)	WEIGHT / PR (LBS)	STANDARD PACKAGE
0294	LIGHT LOADER	20" - 24"	22.8	1 PAIR
0296	SKIDDER / LOADER	25" & UP	26	

0296 PICTURED



0294 / 0296

SPIDER BUNGEEES

STOCK NUMBER	APPLICATION	NUMBER OF ARMS	WEIGHT / PR (LBS)	STANDARD PACKAGE
0218	COMMERCIAL TRUCK	6	1	30 PR
0220	TRACTOR / LIGHT LOADER	7		20 PR



0218

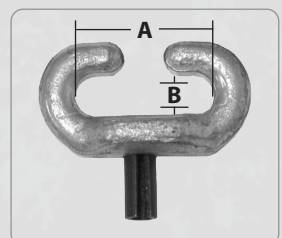


0220

SHACKLES ANCHOR AND PIN COUPLER STYLES

ALLOY SCREW PIN
ANCHOR SHACKLEGALVANIZED PIN
COUPLER SHACKLE

STOCK NUMBER	WORKING LOAD LIMIT (LBS)	STOCK NUMBER	DIMENSIONS (INCHES) A B	WIRE SIZE (INCHES)	METRIC WIRE SIZE
SAC250	1,500	PCS250	1.055 0.355	1/4"	6.4 MM
SAC312	2,000	PCS312	1.425 0.425	5/16"	8 MM
SAC375	4,000	PCS375	1.529 0.503	3/8"	10 MM
SAC437	5,200	-	- -	7/16"	11 MM
SAC531	6,600	PCS531	2.078 0.681	17/32"	13.5 MM
SAC625	10,000	PCS625	2.429 0.777	5/8"	16 MM
SAC750	14,000	PCS750	2.797 0.980	3/4"	19 MM

ALLOY SCREW PIN
ANCHOR SHACKLEGALVANIZED PIN COUPLER
SHACKLE

QUALITY

CHAIN CORP

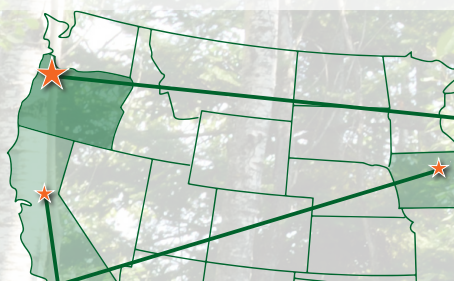


CONTACT US TODAY
TO LOCATE A DEALER
NEAR YOU

PHONE: (503) 614-9664 / FAX: (503) 614-8812

EMAIL: INFO@QUALITYCHAINCORP.COM

WAREHOUSE LOCATIONS



CORPORATE HEADQUARTERS - HILLSBORO, OR

ADDITIONAL WAREHOUSES

- ROCKLIN, CA
- CEDAR RAPIDS, IA

ALSO OFFERING

YOUR ONE-STOP SHOP FOR ALL CARGO CONTROL PRODUCTS



SPECIALIZING IN:
AUTO HAULING
HARDWARE
CUSTOM STRAPS
FLATBED
INDUSTRIAL
INTERIOR VAN



CHECK OUT

OUR ENTIRE LINE OF
TRACTION PRODUCTS:
COMMERCIAL, ATV, PASSENGER
HARDWARE & CUSTOM BUILDS

FOR MORE INFORMATION, UPDATED TIRE FITMENTS, INSTALLATION VIDEOS OR TO DOWNLOAD OUR CATALOGS;
VISIT OUR WEBSITE AT: WWW.QUALITYCHAINCORP.COM